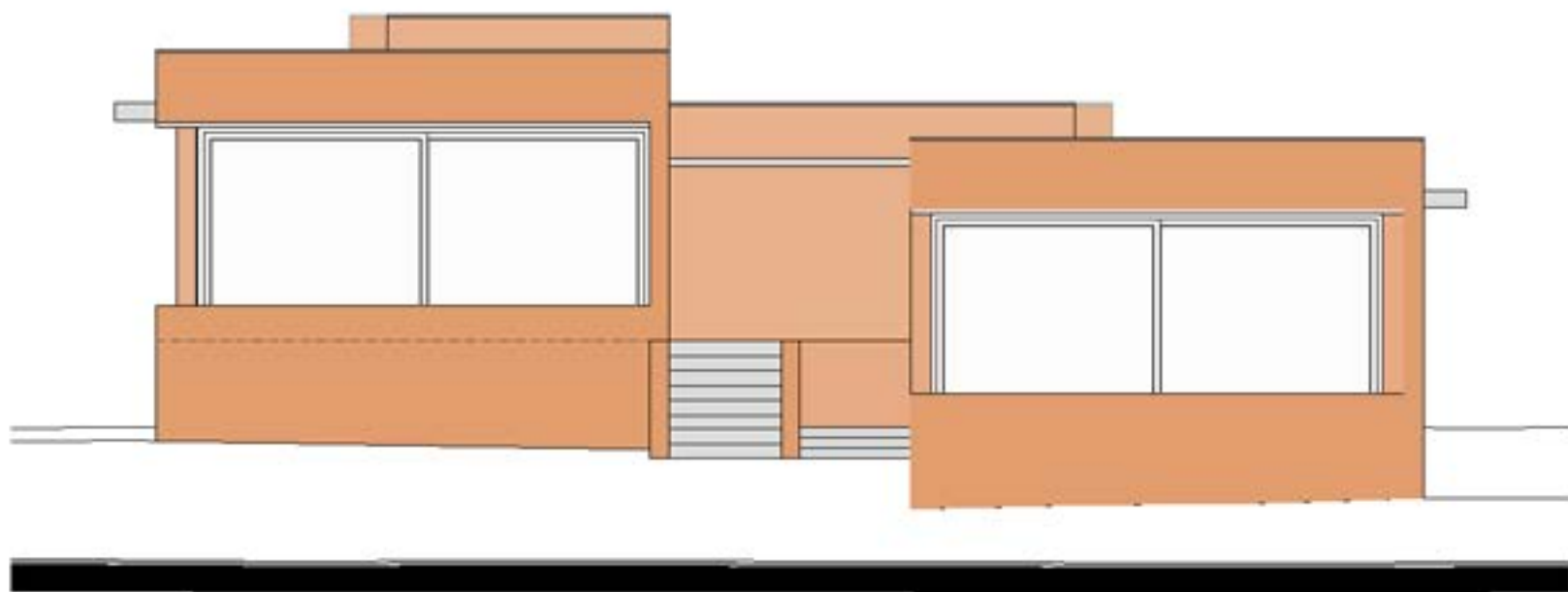




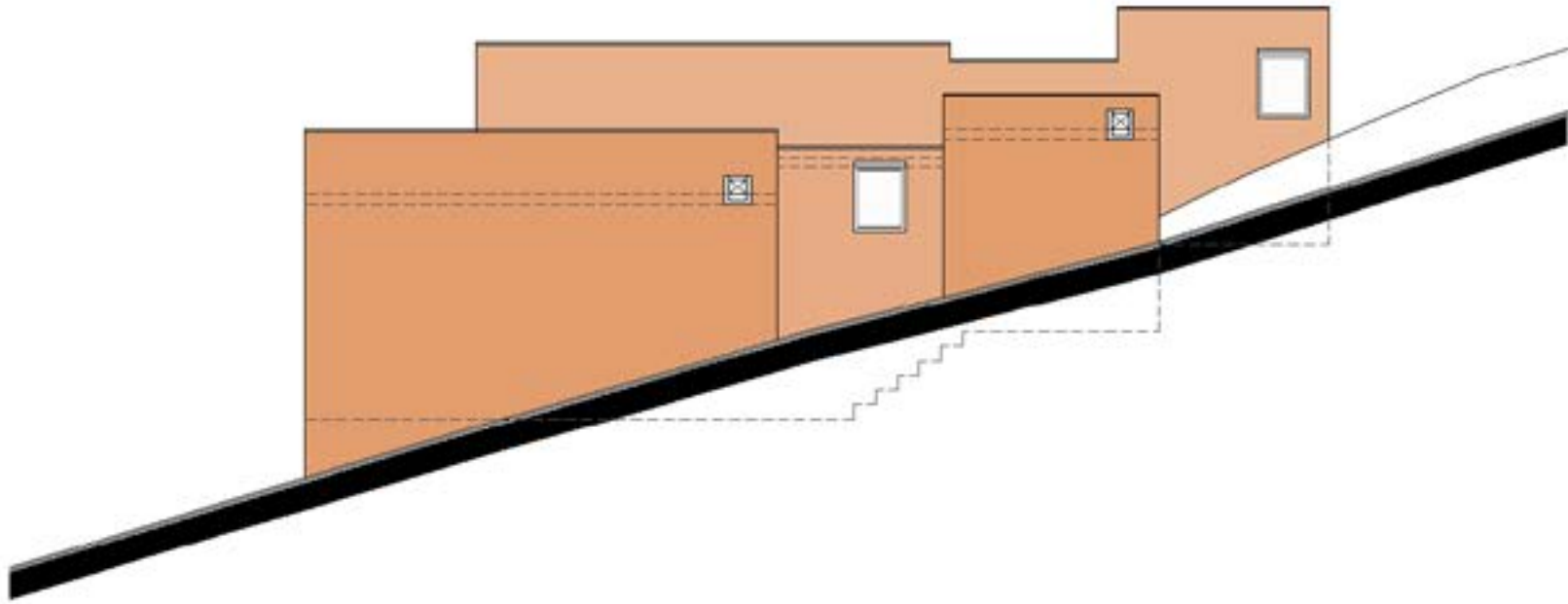


PLANTA



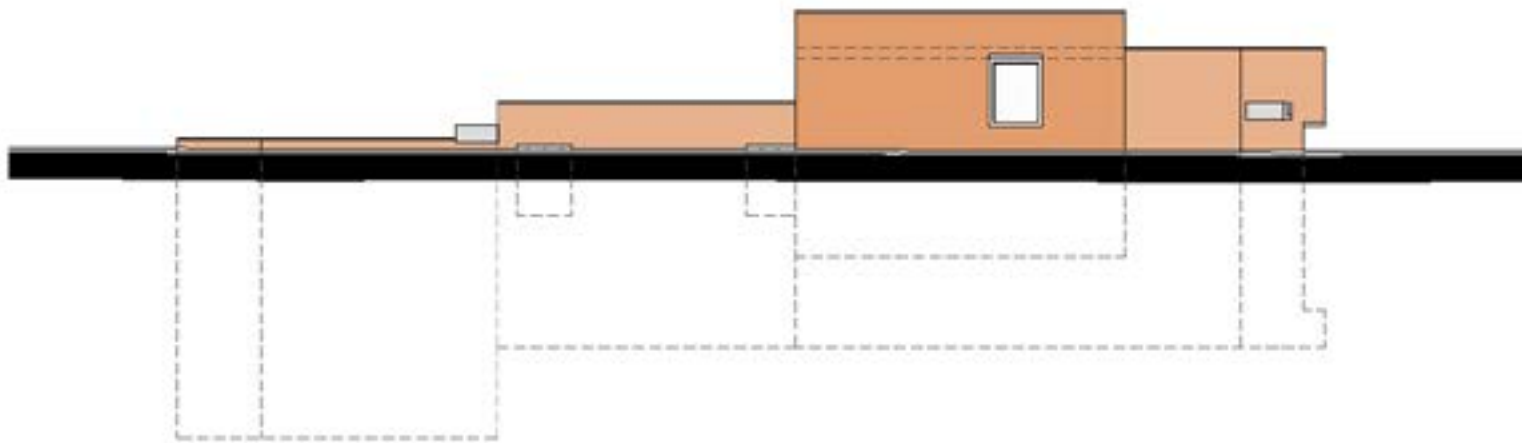
ELEVAÇÃO 1





ELEVAÇÃO 2

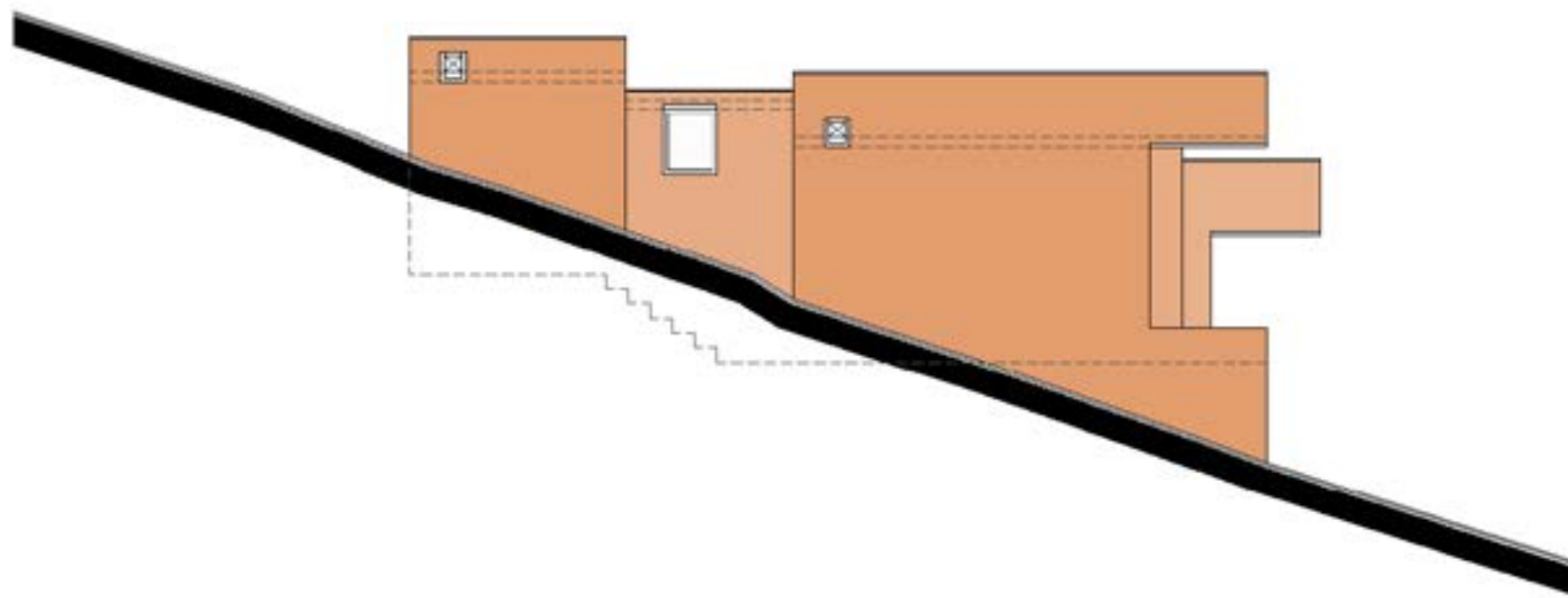




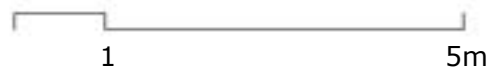
ELEVAÇÃO 3

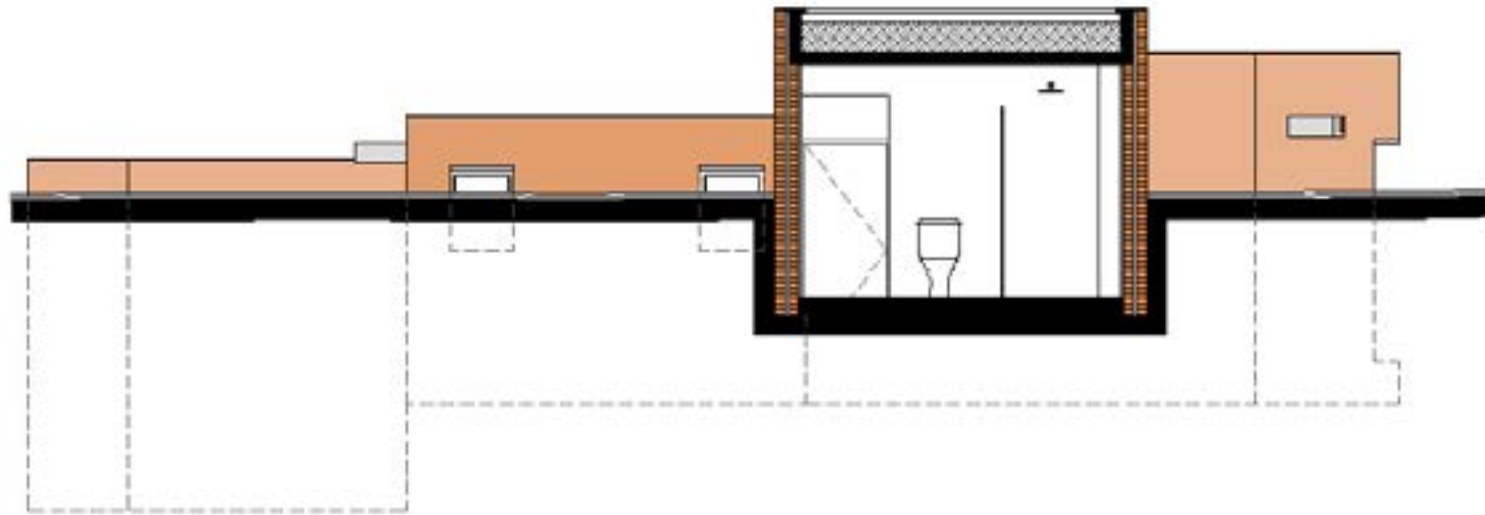






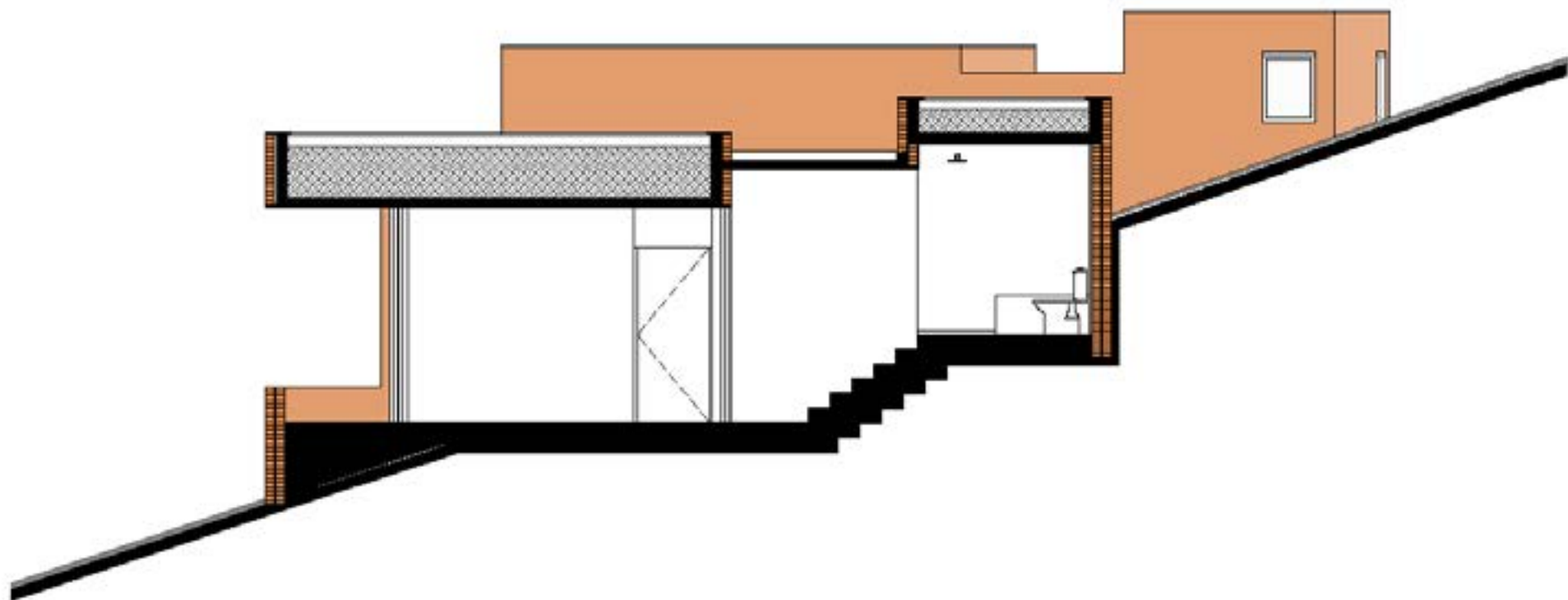
ELEVAÇÃO 4





CORTE A





CORTE B



## **Residência em Gonçalves II**

Gonçalves - Minas Gerais - MG

**Ano do projeto:** 2016

**Ano de execução:** 2018

**Área do terreno:** 7500m<sup>2</sup>

**Área construída:** 86m<sup>2</sup>

**Coordenação:** Fernanda Jozsef

**Colaboradores:** Tiago Wright e Thaís Marcussi

**Estrutura:** Benedictis Engenharia - Eng. Eduardo Duprat

**Execução:** Renato Barros

**Fotografias:** Bob Wolfenson